



# TIIG

INJURY SURVEILLANCE IN THE NORTH WEST OF ENGLAND

## Injury attendances to Rochdale Infirmary Urgent Care Centre

### April 2012 to March 2013

This report summarises recorded injury attendances to Rochdale Infirmary Urgent Care Centre (UCC) between April 2012 and March 2013.

Between April 2012 and March 2013, there were 22,033 injury attendances to Rochdale Infirmary UCC. Males accounted for over half (53%) of all attendances (**Figure 1**). The month with the highest attendances was May (n=2,004) with January (n=1,683) having the lowest attendances. The majority (70%) of attendances were recorded as other injury; of the specified injury groups falls accounted for the highest proportion (15%) followed by road traffic collision (RTC) (6%) and assault (3%) (**Table 1**).

The highest proportion of attendances was for persons aged 5 to 19 (27%) and 20 to 34 (24%) years (**Figure 2**). Over a quarter (27%) fall attendees were aged 65 or over. Over two-fifths (41%) RTC attendees were aged 20 to 34 years (**Figure 3**).

**Table 2** shows the location where injuries occurred. Almost half (49%) of injuries occurred in the home; 13% of injuries occurred in a public place. Two-fifths (40%) of falls occurred in the home whilst over three-quarters (76%) of deliberate self harm (DSH) injuries occurred in the home.

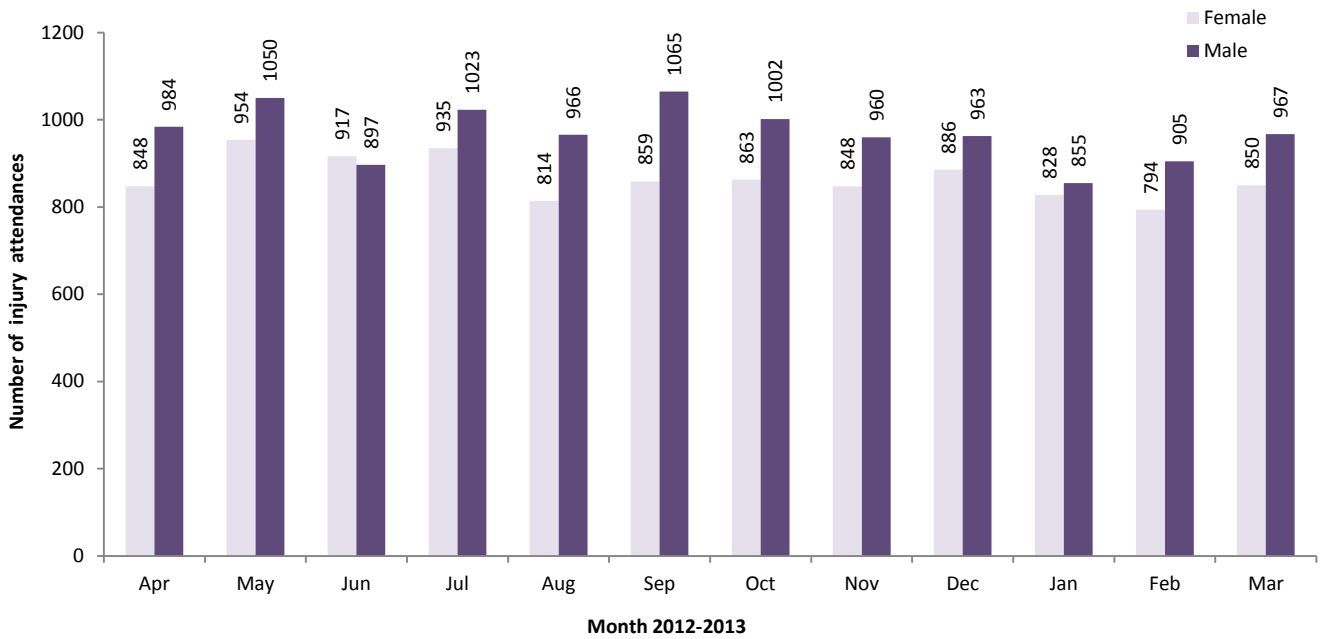
**Table 3** shows the ethnicity of attendees to Rochdale Infirmary ED. Over seven in ten (72%) were white and 19% were Pakistani.

The disposal of a patient can give an indication of the severity of the injuries sustained. Over six in ten (64%) of attendees were discharged, whilst a third (33%) were referred and 2% were admitted (**Table 4**). Over seven in ten (72%) of RTC attendees were discharged (**Table 5**).

**Table 6** shows the arrival methods of attendances at Rochdale Infirmary UCC. Almost three-quarters (74%) arrived by private transport whilst 9% arrived by taxi, 6% on foot and 4% by ambulance.

**Table 7** presents data on assault attendances at Rochdale Infirmary UCC. There were 701 assault attendances recorded between April 2012 and March 2013. Almost seven in ten (69%) were male whilst over four in ten (43%) were aged 20 to 34 years. Nearly half (46%) occurred in a public place.

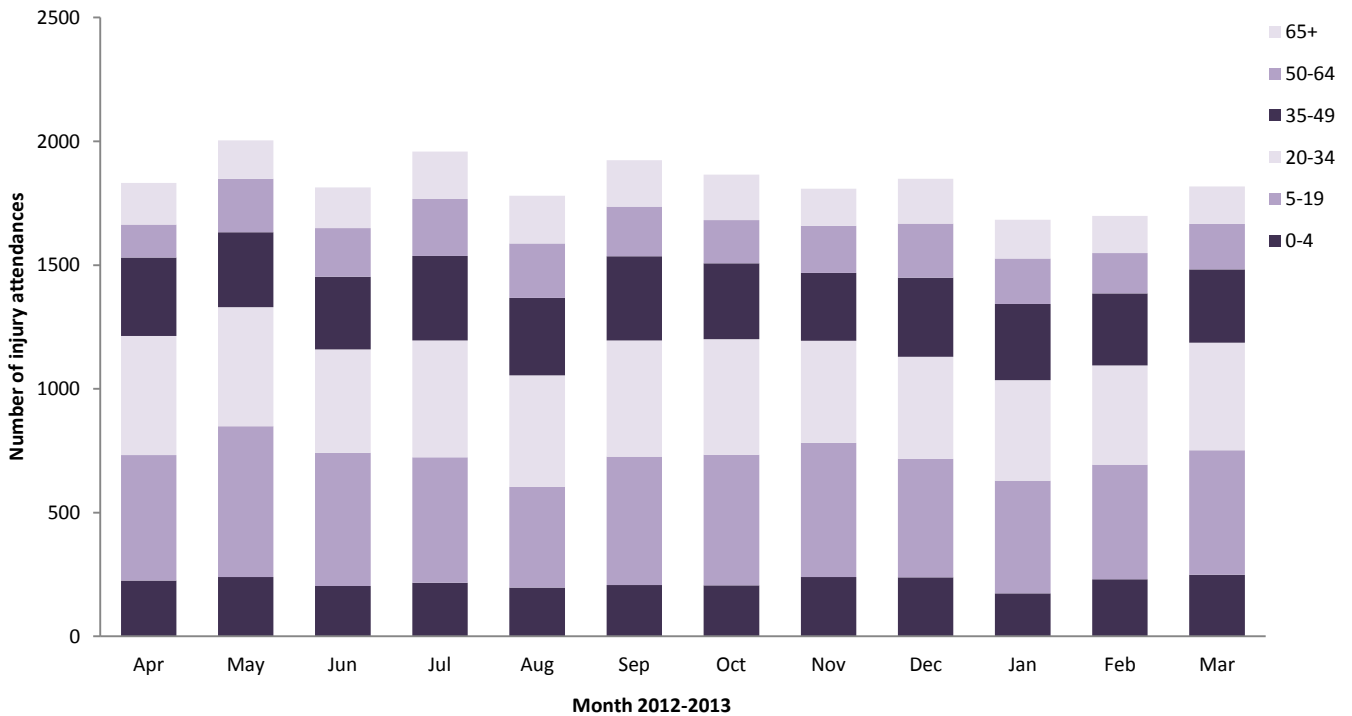
**Figure 1: Rochdale Infirmary UCC: Total injury attendances by gender and month, April 2012 to March 2013**



**Table 1: Rochdale Infirmary UCC: Total injury attendances by injury group and month, April 2012 to March 2013<sup>1</sup>**

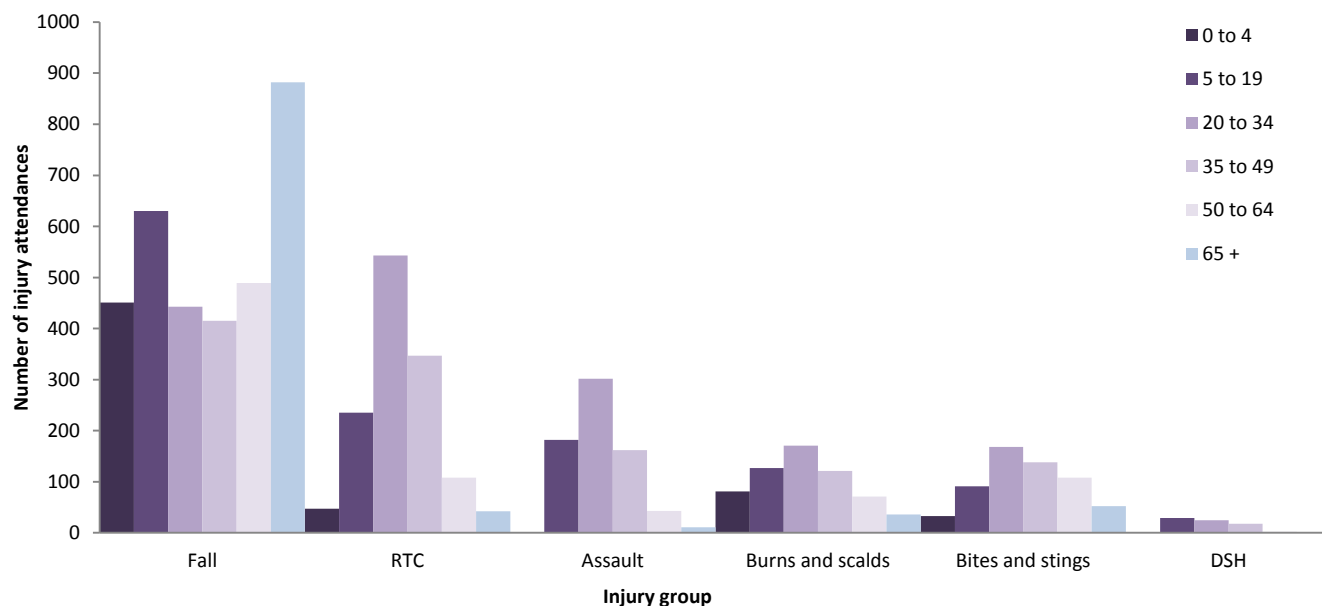
Injury group	Apr	May	Jun	Jul	Aug	Sep	Oct	Nov	Dec	Jan	Feb	Mar	Total	%
Other injury	1346	1363	1250	1344	1192	1338	1322	1350	1281	1121	1222	1300	15429	70
Fall	234	316	252	278	281	263	273	214	350	331	238	280	3310	15
RTC	112	90	157	146	90	139	103	100	90	83	114	98	1322	6
Assault	66	81	51	62	60	56	60	52	58	57	41	57	701	3
Burns and scalds	33	84	50	48	50	62	56	60	32	47	48	37	607	3
Bites and stings	33	<70	49	75	<110	60	45	27	30	34	29	39	590	3
DSH	8	***	5	5	***	6	6	5	8	10	7	6	74	0
<b>Total</b>	<b>1832</b>	<b>2004</b>	<b>1814</b>	<b>1958</b>	<b>1780</b>	<b>1924</b>	<b>1865</b>	<b>1808</b>	<b>1849</b>	<b>1683</b>	<b>1699</b>	<b>1817</b>	<b>22033</b>	<b>100</b>

**Figure 2: Rochdale Infirmary UCC: Total injury attendances by age group and month, April 2012 to March 2013**



<sup>1</sup> Please note that all numbers less than five have been suppressed in line with patient confidentiality and if there is only one number <5 in a category then two numbers will be suppressed at the next level.

**Figure 3: Rochdale Infirmary UCC: Total injury attendances by age group and injury group (excluding other injury), April 2012 to March 2013**



**Table 2: Rochdale Infirmary UCC: Total injury attendances by location of incident and injury group, April 2012 to March 2013<sup>1</sup>**

Incident location	Assault		Bites and stings		Burns and scalds		DSH		Fall		RTC		Other		Total	
	n	%	n	%	n	%	n	%	n	%	n	%	n	%	n	%
Home	138	20	245	42	323	53	56	76	1336	40	32	2	8633	56	10763	49
Other	107	15	122	21	43	7	13	18	372	11	1220	92	2448	16	4325	20
Public place	319	46	<150	25	13	2	***	3	919	28	15	1	1468	10	2881	13
Not recorded	61	9	<40	6	157	26	***	3	318	10	48	4	1054	7	1677	8
Work	45	6	39	7	65	11	0	0	130	4	7	1	898	6	1184	5
Educational establishment	31	4	***	0	6	1	***	1	235	7	0	0	928	6	1203	5
<b>Total</b>	<b>701</b>	<b>100</b>	<b>590</b>	<b>100</b>	<b>607</b>	<b>100</b>	<b>74</b>	<b>100</b>	<b>3310</b>	<b>100</b>	<b>1322</b>	<b>100</b>	<b>15429</b>	<b>100</b>	<b>22033</b>	<b>100</b>

**Table 3: Rochdale Infirmary UCC: Total injury attendances by ethnicity and month, April 2012 to March 2013<sup>1,2</sup>**

Ethnicity	Apr	May	Jun	Jul	Aug	Sep	Oct	Nov	Dec	Jan	Feb	Mar	Total	%
White	1312	1442	1236	1407	1355	1409	1337	1268	1271	1231	1217	1345	15830	72
Pakistani	363	393	412	379	303	349	356	365	419	299	323	322	4283	19
Bangladeshi	29	44	48	42	28	47	48	56	56	41	50	40	529	2
Not recorded	49	47	43	46	36	38	38	37	29	34	32	33	462	2
Black	28	22	23	27	15	24	29	30	22	15	18	18	271	1
Mixed	16	26	13	14	17	17	19	21	20	23	21	16	223	1
Any other ethnic group	16	10	18	23	15	13	16	12	15	15	16	16	185	1
Any other asian background	11	11	11	12	***	12	<10	12	10	16	11	9	128	1
Indian	8	<10	10	<10	<10	<15	<15	***	7	<10	<10	<15	100	0
Chinese	0	***	0	***	***	***	***	***	0	***	***	***	22	0
<b>Total</b>	<b>1832</b>	<b>2004</b>	<b>1814</b>	<b>1958</b>	<b>1780</b>	<b>1924</b>	<b>1865</b>	<b>1808</b>	<b>1849</b>	<b>1683</b>	<b>1699</b>	<b>1817</b>	<b>22033</b>	<b>100</b>

**Table 4: Rochdale Infirmary UCC: Total injury attendances by method of disposal and month, April 2012 to March 2013<sup>1,3</sup>**

Disposal	Apr	May	Jun	Jul	Aug	Sep	Oct	Nov	Dec	Jan	Feb	Mar	Total	%
Discharged	1156	1320	1088	1246	1069	1195	1203	1173	1206	1047	1174	1227	14104	64
Referral/follow-up	614	625	652	642	653	675	610	581	594	603	483	530	7262	33
Admitted	56	40	51	59	51	46	44	46	38	<35	<40	43	540	2
Other	6	19	23	11	7	8	8	8	11	***	<10	17	127	1
<b>Total</b>	<b>1832</b>	<b>2004</b>	<b>1814</b>	<b>1958</b>	<b>1780</b>	<b>1924</b>	<b>1865</b>	<b>1808</b>	<b>1849</b>	<b>1683</b>	<b>1699</b>	<b>1817</b>	<b>22033</b>	<b>100</b>

<sup>1</sup> Please note that all numbers less than five have been suppressed in line with patient confidentiality and if there is only one number <5 in a category then two numbers will be suppressed at the next level.

<sup>2</sup> White = Irish, British, other white background; Mixed = white and black, white and Asian, mixed any other; Black = African, Caribbean, other black.

<sup>3</sup> Admitted=admitted to UCC bed/became a lodged patient of the same health care provider; Discharged=discharged - did not require any follow up treatment; Referral/follow-up =discharged - follow up treatment to be provided by GP, referred to UCC clinic, referred to fracture clinic, referred to other out-patient clinic, referred to other health care professional; Other=died in department, left department before being treated, left department having refused treatment, other.

**Table 5: Rochdale Infirmary UCC: Total injury attendances by method of disposal and injury group, April 2012 to March 2013<sup>1</sup>**

Disposal	Assault		Bites and stings		Burns and scalds		DSH		Fall		Other injury		RTC		Total	
	n	%	n	%	n	%	n	%	n	%	n	%	n	%	n	%
Discharged	435	62	457	77	202	33	34	46	1944	59	10076	65	956	72	14104	64
Referral/follow-up	207	30	127	22	371	61	26	35	1118	34	5058	33	355	27	7262	33
Admitted	20	3	<10	1	24	4	<15	14	202	6	275	2	***	0	540	2
Other	39	6	***	0	10	2	***	5	46	1	20	0	<10	1	127	1
<b>Total</b>	<b>701</b>	<b>100</b>	<b>590</b>	<b>100</b>	<b>607</b>	<b>100</b>	<b>74</b>	<b>100</b>	<b>3310</b>	<b>100</b>	<b>15429</b>	<b>100</b>	<b>1322</b>	<b>100</b>	<b>22033</b>	<b>100</b>

**Table 6: Rochdale Infirmary UCC: Total injury attendances by mode of arrival and month, April 2012 to March 2013<sup>1</sup>**

Arrival mode	Apr	May	Jun	Jul	Aug	Sep	Oct	Nov	Dec	Jan	Feb	Mar	Total	%
Private transport	1394	1480	1330	1430	1322	1453	1378	1323	1405	1180	1259	1387	16341	74
Taxi	147	167	123	165	138	143	173	188	177	197	163	176	1957	9
Foot	100	118	98	106	96	109	106	114	91	109	106	99	1252	6
Other	104	124	140	134	114	105	97	75	70	71	58	51	1143	5
Ambulance	53	58	79	70	65	67	71	53	70	74	85	50	795	4
Public transport	26	30	34	33	33	24	31	41	22	28	21	30	353	2
Work transport	<10	19	<10	13	<10	14	<10	14	8	<25	***	12	134	1
Police	***	8	***	7	***	9	***	0	6	***	***	12	58	0
<b>Total</b>	<b>1832</b>	<b>2004</b>	<b>1814</b>	<b>1958</b>	<b>1780</b>	<b>1924</b>	<b>1865</b>	<b>1808</b>	<b>1849</b>	<b>1683</b>	<b>1699</b>	<b>1817</b>	<b>22033</b>	<b>100</b>

**Table 7: Rochdale Infirmary UCC: Assault attendances by gender, incident location and age group of attendance, April 2012 to March 2013<sup>1</sup>**

	Assaults (n=701)		All injuries (n=22,033)
	n	%	%
<b>Gender</b>			
Female	214	31	47
Male	487	69	53
<b>Location</b>			
Home	138	20	49
Other	107	15	20
Public place	319	46	13
Not recorded	61	9	8
Work	45	6	5
Educational establishment	31	4	5
<b>Age group</b>			
0 - 4	***	0	12
5-19	182	26	27
20 - 34	302	43	24
35 - 49	162	23	17
50 - 64	43	6	10
65 plus	<15	2	9

Published July 2013  
 Jennifer Brizell (TIIG researcher)  
 Centre for Public Health, Faculty of Health and Applied Social Sciences, Liverpool John Moores University  
 2<sup>nd</sup> Floor, Henry Cotton Campus, 15-21 Webster Street, Liverpool, L3 2ET  
 Tel: 0151 231 4500 Email: [j.s.brizell@ljmu.ac.uk](mailto:j.s.brizell@ljmu.ac.uk)  
 Website: [www.tiig.info](http://www.tiig.info) (please note all data requests should be made through the TIIG website)

<sup>1</sup> Please note that all numbers less than five have been suppressed in line with patient confidentiality and if there is only one number <5 in a category then two numbers will be suppressed at the next level.